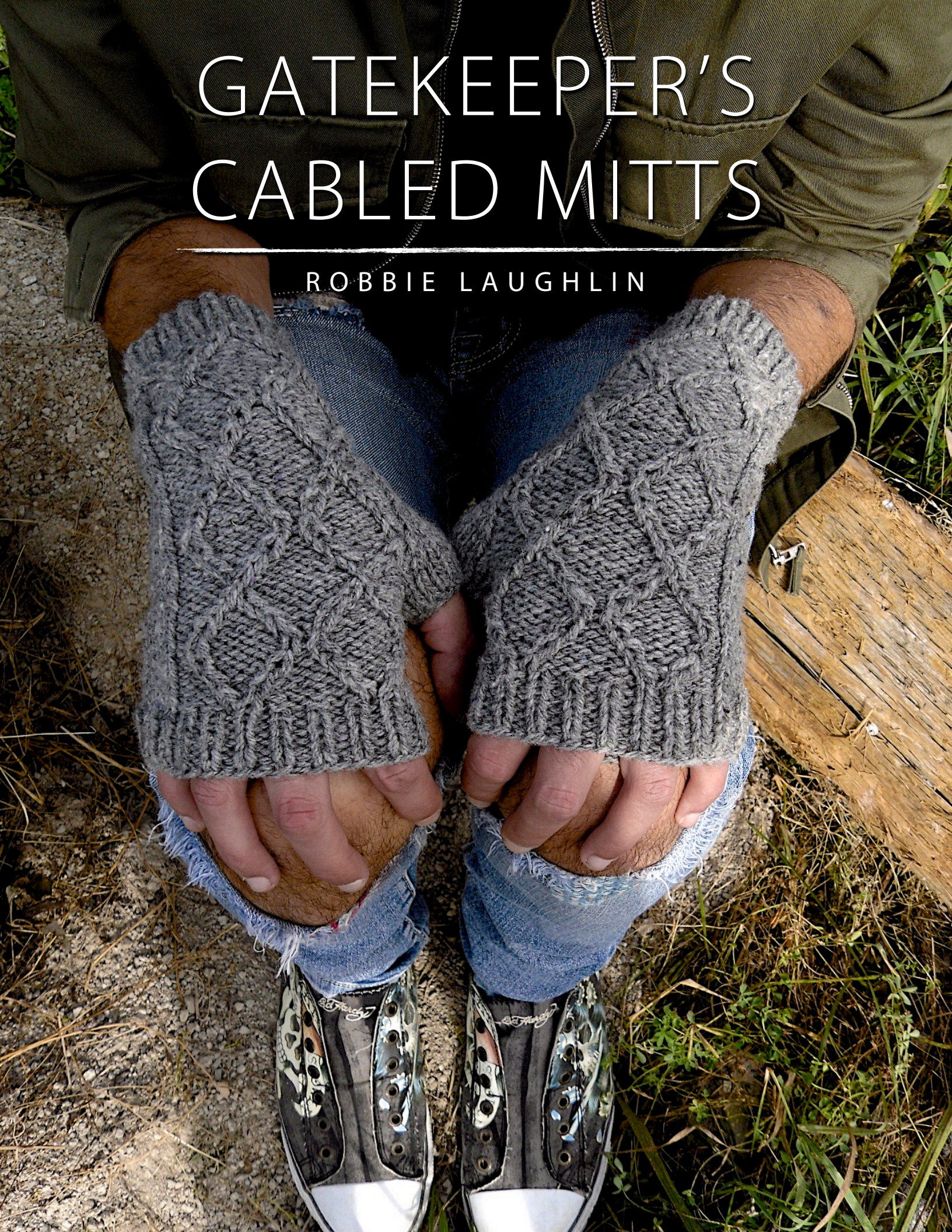


GATEKEEPER'S CABLED MITTS

ROBBIE LAUGHLIN





GATEKEEPER'S CABLED MITTS

Twisted stitches wrapping back and forth in waves make for an interesting pair of cabled fingerless mitts, the perfect accessory for colder morning commutes. Knit in Nurtured, these mitts will only become more comfortable and cosy with each wear.

Gauge

20 sts and 30 rounds = 4" in St. st

Measurements

See Sizes

Materials

Julie Asselin Nurtured

100% wool (Rambouillet, Targhee and Merino)

57g (2.01oz) = 119 metres (130 yards)

1(1,1, 2, 2) Skeins, shown in Fer a Cheval

Needles

4.5mm (US7) needles for small circumference knitting

Notions

2 Stitch markers

Cable needle

Abbreviations

Est	Established	P	Purl
K	Knit	Pm	Place marker
LC	Skip the first st on left needle, knit the second st through the back loop; knit the first st, then let both sts drop off the needle	R	Row or Round (s)
LPC	Slip 1 stitch to cn and hold at front; P1, K1 from cn	RC	Skip the first st on left needle, knit the second st through the front loop; knit the first st, then let both sts drop off the needle
M	Marker	Rm	Remove marker
M1L	Make one left; with left needle, pick up bar between stitch on right needle and the st about to be knit from front to back; knit into the back of stitch picked up (1 st inc)	RPC	Slip 1 stitch to cn and hold at back; K1, P1 from cn
M1R	Make one right; with left needle, pick up bar between stitch on right needle and the st about to be knit from back to front; knit into the front of stitch picked up (1 st inc)	Sm	Slip marker
		St(s)	Stitch(es)



JULIE ASSELIN
LAINES ET FILS • YARNS & THREADS

Julie Asselin is located in Coaticook, Quebec. She practices ethical dyeing by reducing the amount of chemicals she uses and has developed techniques that reduce water waste.

Nurtured is a unique yarn, in that the fleece is made up of three different sheep breeds which take the dyes differently. It is first dyed, then blended and spun into a woolen yarn at Green Mountain Spinnery, in Vermont. The wool is from sheep who grazed in Vermont, New Hampshire and Wisconsin. Mittens made of Nurtured are what I reach for first on a cold day.

Find out more at www.julie-asselin.com

All patterns, images and works contained herein are subject to copyright and may not be reproduced in any form. Patterns are for personal or yarn shop use only. You may not sell or reproduce items based on these patterns without express consent in writing. Please contact me@robbieloughlin.ca with any requests or for pattern support.

GATEKEEPER'S CABLED MITTS

Sizes

Extra Small (6" circumference, 7.5" long)

Small (7.0" circumference, 8" long)

Medium (7.75" circumference, 8.25" long)

Large (8.5" circumference, 8.25" long)

Extra Large (9" circumference, 8.25" long)

Instructions

Using long-tail method, cast on 32 (36, 40, 44, 48) sts.

Pm for beginning of round; join to work in the round, being careful not to twist the stitches.

Left Mitt Cuff

R1: (P1, K1) to end of round.

Repeat this round 7 (7, 7, 9, 9) more times.

Right Mitt Cuff

R1: (K1, P1) to end of round.

Repeat this round 7 (7, 7, 9, 9) more times.

Both Mitts

Next round: Work Gatekeeper's Cable Chart across first 18 stitches, knit to end of round. (Note: written instructions are included as well.)

Work as est, until Round 14 of the appropriate chart is completed.

Thumb Gusset—Left Mitt Only

Set-up: Work chart across first 18 sts as est, knit to last 2 sts, Pm, M1R, K2, M1L, Pm.

R1: Work even in pattern as est, slipping all markers.

R2: Work even in pattern as est, slipping all markers.

R3: Work in pattern as est across first 18 sts, knit to next marker, Sm, M1R, knit to end of round, M1L.

Repeat R1-R3, 2 (3, 4, 5, 6) more times.

8 (10, 12, 14, 16) sts created for thumb gusset.

Repeat R1-R2 once more.

Thumb Gusset—Right Mitt Only

Set-up: Work chart across first 18 sts as est, Pm, M1R, K2, M1L, Pm, knit to end of round.

R1: Work even in pattern as est, slipping all markers.

R2: Work even in pattern as est, slipping all markers.

R3: Work in pattern as est across first 18 sts, Sm, M1R, knit to next marker, M1L, Sm, knit to end of round.

Repeat R1-R3, 2 (3, 4, 5, 6) more times.

8 (10, 12, 14, 16) sts created for thumb gusset.

Repeat R1-R2 once more.

Separate for Thumb

Left Mitt only

Work even in pattern as est to next marker, remove marker, place next 8 (10, 12, 14, 16) sts on holder or waste yarn. Using Backwards Loop Method, cast on 2 sts. 32 (36, 40, 44, 48) sts. Join to resume working in the round.

Right Mitt only

Work in pattern to marker, remove marker and slip the next 8 (10, 12, 14, 16) sts onto a stitch holder. Using the backward loop method, cast on 2 sts, then knit to end of round. 32 (36, 40, 44, 48) sts.

Both Mitts

Work even in pattern as est until Round 49 of the chart is complete.

Left Mitt Upper Cuff

R1: (K1, P1) to end of round.

Repeat this round 3 (3, 3, 5, 5) more times.

Bind off in pattern.

Right Mitt Upper Cuff

R1: (P1, K1) to end of round.

Repeat this round 3 (3, 3, 5, 5) more times.

Bind off in pattern.

Thumb

Return the 8 (10, 12, 14, 16) sts from holder or waste yarn onto needles.

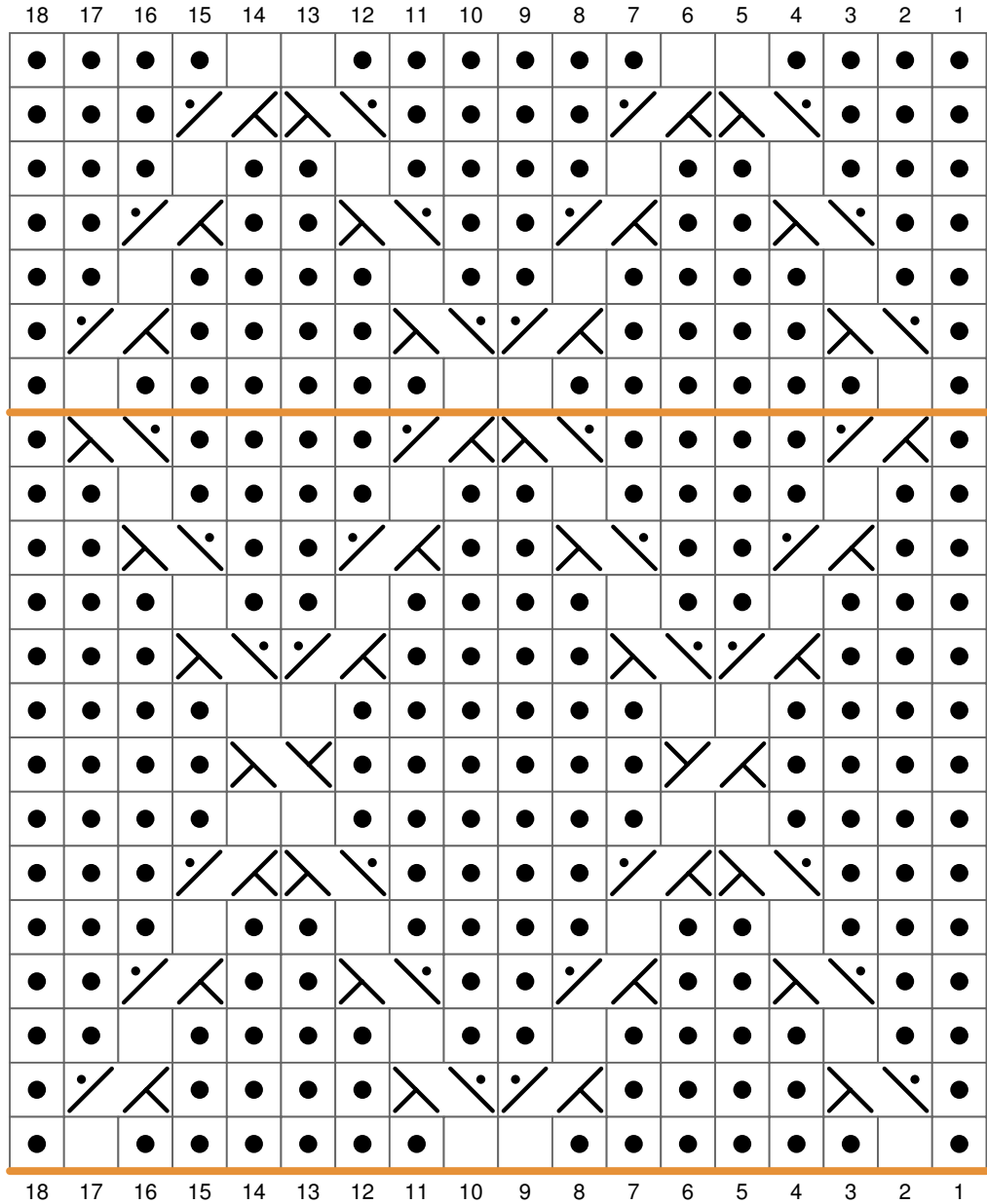
Rejoin yarn, with outside of mitt facing, pick up and knit 1 stitch at side of thumb opening, 2 sts along top edge of thumb opening and 1 stitch at opposite side of thumb opening. Distribute all stitches across needles as necessary and join for working in the round—12 (14, 16, 18, 20) sts.








Knit 6 rounds. Bind off purl-wise.

Finishing

Block to finished measurements and weave in ends.

GATEKEEPER'S CABLE CHART



-  Knit
-  Purl
-  LPC
-  RPC
-  LC
-  RC
-  Repeat 3 times total

GATEKEEPER'S CABLE CHART (WRITTEN)

R1: P1, K1, P6, K2, P6, K1, P1

R2: P1, LPC, P4, RPC, LPC, P4, RPC, P1

R3: P2, K1, P4, K1, P2, K1, P4, K1, P2

R4: P2, LPC, P2, RPC, P2, LPC, P2, RPC, P2

R5: P3, K1, P2, K1, P4, K1, P2, K1, P3

R6: P3, LPC, RPC, P4, LPC, RPC, P3

R7: P4, K2, P6, K2, P4

R8: P4, RC, P6, LC, P4

R9: P4, K2, P6, K2, P4

R10: P3, RPC, LPC, P4, RPC, LPC, P3

R11: P3, K1, P2, K1, P4, K1, P2, K, P3

R12: P2, RPC, P2, LPC, P2, RPC, P2, LPC, P2

R13: P2, K1, P4, K1, P2, K1, P4, K1, P2

R14: P1, RPC, P4, LPC, RPC, P4, LPC, P1

Repeat R1 - R14, **two** more times.

R15: P1, K1, P6, K2, P6, K1, P1

R16: P1, LPC, P4, RPC, LPC, P4, RPC, P1

R17: P2, K1, P4, K1, P2, K1, P4, K1, P2

R18: P2, LPC, P2, RPC, P2, LPC, P2, RPC, P2

R19: P3, K1, P2, K1, P4, K1, P2, K1, P3

R20: P3, LPC, RPC, P4, LPC, RPC, P3

R21: P4, K2, P6, K2, P4